

## PACi Standard 4 Way 90x90 Cassette - PU3 - R32

### New 4 way 90x90 cassette - PU3 for R32 PACi

Powerful turbo fan and intelligent Econavi sensor ensures high energy efficiency and nanoe™ X which is equipped as standard provides an exceptional level of indoor air quality.

- High performance turbo fan, path system for heat exchanger
- Econavi: An optional intelligent sensor to reduce waste of energy
- nanoe™ X (Generator Mark 1= 4,8 trillion OH radicals/ sec) as standard for better indoor air quality, indoor unit internal cleaning with nanoe™ X and dry operation
- Lower noise in slow fan operation
- Light weight, easy piping and integrated drain pump for quick installation
- New wired remote control CZ-RTC6BL allows easy system setting via Bluetooth®
- High volume fresh air input with optional air-intake chamber (CZ-FDU3+CZ-ATU2)



### nanoe? X, teknologi, der benytter hydroxylradikaler

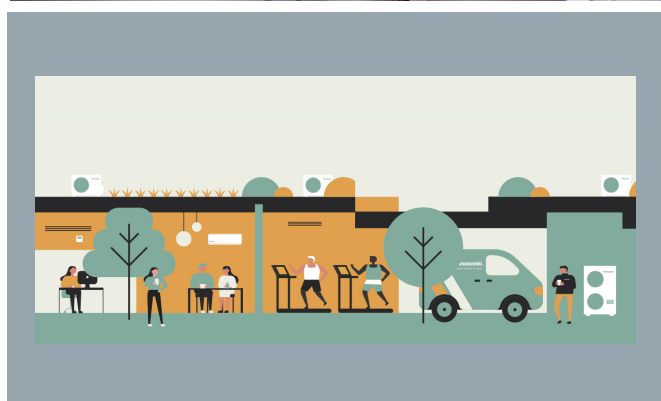
[FÅ MERE AT VIDE](#)



### Ny PU3 med 4 90 × 90-cellefiltre med nanoe? X

Disse cellefiltre har opgraderede nanoe? X- og Econaviteknologier, der gør rummets luft mere komfortabel og sund og øger energieffektiviteten.

[FÅ MERE AT VIDE](#)



### PACi Standard eller Elite

To løsninger for erhverv, kontorer eller boliger.

[FÅ MERE AT VIDE](#)

PACi Standard 4 Way 90x90 Cassette - PU3 - R32		Enkeltfaset					Trefaset		
		6.0 kW	7.1 kW	10.0 kW	12.5 kW	14.0 kW	10.0 kW	12.5 kW	14.0 kW
Kit		KIT-60PU3Z25	KIT-71PU3Z25	KIT-100PU3Z25	KIT-125PU3Z25	KIT-140PU3Z25	KIT-100PU3Z28	KIT-125PU3Z28	KIT-140PU3Z28
Remote controller		CZ-RTC6	CZ-RTC6	CZ-RTC6	CZ-RTC6	CZ-RTC6	CZ-RTC6	CZ-RTC6	CZ-RTC6
Cooling capacity (Nominal)	kW	6,0	7,1	10,0	12,5	14,0	10,0	12,5	14,0
Cooling capacity (Min)	kW	2,0	2,0	3,0	3,2	3,3	3,0	3,2	3,3
Cooling capacity (Max)	kW	7,1	7,7	11,5	13,5	15,0	11,5	13,5	15,0
EER (Nominal) (1)	W/W	4,00	3,50	3,82	3,58	3,23	3,82	3,58	3,23
EER (Min) (1)	W/W	8,00	8,00	5,36	5,33	5,32	5,36	5,33	5,32
EER (Max) (1)	W/W	3,36	3,01	2,88	2,81	2,73	2,88	2,81	2,73
SEER/nsc (2)	%	7,6 A++	7,6 A++	6,8 A++	267,1	257,3	6,7 A++	266,1	256,5
Pdesign (cooling)	kW	6,0	7,1	10,0	12,5	14,0	10,0	12,5	14,0
Input power cooling (Nominal)	kW	1,50	2,03	2,62	3,49	4,34	2,62	3,49	4,34
Input power cooling (Min)	kW	0,25	0,25	0,56	0,60	0,62	0,56	0,60	0,62
Input power cooling (Max)	kW	2,11	2,56	4,00	4,80	5,50	4,00	4,80	5,50
Annual energy consumption cooling (3)	kWh/a	276	327	515	—	—	521	—	—
Heating capacity (Nominal)	kW	6,0	7,1	10,0	12,5	14,0	10,0	12,5	14,0
Heating capacity (Min)	kW	1,8	1,8	3,0	3,3	3,4	3,0	3,3	3,4
Heating capacity (Max)	kW	7,0	8,1	14,0	15,0	16,0	14,0	15,0	16,0
COP (Nominal) (1)	W/W	4,72	4,36	4,93	4,43	4,18	4,93	4,43	4,18
COP (Min) (1)	W/W	9,47	9,47	5,36	5,50	5,48	5,36	5,50	5,48
COP (Max) (1)	W/W	4,49	3,80	3,59	3,57	3,33	3,59	3,57	3,33
SCOP/nsc (2)	%	4,7 A++	4,7 A++	4,4 A+	157,3	152,4	4,4 A+	157,3	152,4
Pdesign at -10°C	kW	6,0	6,0	10,0	12,5	14,0	10,0	12,5	14,0
Input power heating (Nominal)	kW	1,27	1,63	2,03	2,82	3,35	2,03	2,82	3,35
Input power heating (Min)	kW	0,19	0,19	0,56	0,60	0,62	0,56	0,60	0,62
Input power heating (Max)	kW	1,56	2,13	3,90	4,20	4,80	3,90	4,20	4,80
Annual energy consumption heating (3)	kWh/a	1787	1787	3182	—	—	3182	—	—
Indoor unit		S-6071PU3E	S-6071PU3E	S-1014PU3E	S-1014PU3E	S-1014PU3E	S-1014PU3E	S-1014PU3E	S-1014PU3E
Indoor air flow (Hi)	m³/min	21,0	22,0	36,0	37,0	38,0	36,0	37,0	38,0
Indoor air flow (Med)	m³/min	16,0	16,0	26,0	27,0	29,0	26,0	27,0	29,0
Indoor air flow (Lo)	m³/min	13,0	13,0	18,0	19,0	20,0	18,0	19,0	20,0
Moisture removal volume	L/h	1,7	2,5	2,7	4,8	6	2,7	4,8	6
Indoor sound pressure (Med) (4)	dB(A)	31	31	38	39	40	38	39	40
Indoor sound pressure (Lo) (4)	dB(A)	28	28	32	33	34	32	33	34
Indoor sound power (Hi)	dB(A)	51	52	60	61	62	60	61	62
Indoor sound power (Med)	dB(A)	46	46	53	54	55	53	54	55
Indoor sound power (Lo)	dB(A)	43	43	47	48	49	47	48	49
Indoor dimension (Height)	mm	256	256	319	319	319	319	319	319
Indoor dimension (Width)	mm	840	840	840	840	840	840	840	840
Indoor dimension (Depth)	mm	840	840	840	840	840	840	840	840
Panel dimension (Height)	mm	33,5	33,5	33,5	33,5	33,5	33,5	33,5	33,5
Panel dimension (Depth)	mm	950	950	950	950	950	950	950	950
Indoor net weight	kg	20	20	25	25	25	25	25	25
Panel net weight	kg	5	5	5	5	5	5	5	5
nanoe X Generator		mar-01	mar-01	mar-01	mar-01	mar-01	mar-01	mar-01	mar-01
Outdoor unit		U-60PZ2E5	U-71PZ2E5	U-100PZ2E5	U-125PZ2E5	U-140PZ2E5	U-100PZ2E8	U-125PZ2E8	U-140PZ2E8
Outdoor power source	V	220 - 230 - 240	220 - 230 - 240	220 - 230 - 240	220 - 230 - 240	220 - 230 - 240	380 - 400 - 415	380 - 400 - 415	380 - 400 - 415
Current in cooling (1p 220V / 3p 380)	A	7,40	9,95	12,00	16,30	20,40	4,10	5,45	6,80
Current in cooling (1p 230V / 3p 400)	A	7,05	9,50	11,50	15,60	19,50	3,90	5,20	6,50
Current in cooling (1p 240V / 3p 415)	A	6,75	9,10	11,00	15,00	18,70	3,75	5,00	6,25
Current in heating (1p 220V / 3p 380)	A	6,25	8,05	9,25	13,10	15,60	3,15	4,40	5,25
Current in heating (1p 230V / 3p 400)	A	5,95	7,70	8,85	12,50	14,90	3,00	4,15	4,95
Current in heating (1p 240V / 3p 415)	A	5,70	7,35	8,50	12,00	14,30	2,90	4,00	4,80
Outdoor air flow (Cool)	m³/min	40	50	76	86	89	76	86	89
Outdoor air flow (Heat)	m³/min	45	45	70	78	83	70	78	83
Outdoor sound pressure (Cool -Hi)	dB(A)	46	49	52	55	56	52	55	56
Outdoor sound pressure (Heat -Hi)	dB(A)	48	49	52	55	56	52	55	56
Outdoor sound power (Cool -Hi)	dB(A)	65	69	70	73	74	70	73	74
Outdoor sound power (Heat -Hi)	dB(A)	68	69	70	73	74	70	73	74
Outdoor dimension (Height)	mm	695	695	996	996	996	996	996	996
Outdoor dimension (Width)	mm	875	875	980	980	980	980	980	980
Outdoor dimension (Depth)	mm	320	320	370	370	370	370	370	370
Outdoor net weight	kg	44	44	90	94	94	90	94	94
Pipe diameter (Liquid)	Inch (mm)	3/8 (9,52)	3/8 (9,52)	3/8 (9,52)	3/8 (9,52)	3/8 (9,52)	3/8 (9,52)	3/8 (9,52)	3/8 (9,52)
Pipe diameter (Gas)	Inch (mm)	5/8 (15,88)	5/8 (15,88)	5/8 (15,88)	5/8 (15,88)	5/8 (15,88)	5/8 (15,88)	5/8 (15,88)	5/8 (15,88)
Pipe length range	m	3 ~ 40	3 ~ 40	5 ~ 50	5 ~ 50	5 ~ 50	5 ~ 50	5 ~ 50	5 ~ 50
Elevation difference (in/out) (5)	m	30	30	30	30	30	30	30	30
Pipe length for additional gas	m	30	30	30	30	30	30	30	30
Additional gas amount	g/m	35	35	45	45	45	45	45	45
Refrigerant (R32) / CO2 Eq.	kg / T	1,45 / 0,979	1,45 / 0,979	2,60 / 1,755	2,98 / 2,0115	2,98 / 2,0115	2,60 / 1,755	2,98 / 2,0115	2,98 / 2,0115
Operating range (Cool - Min)	°C	-10	-10	-10	-10	-10	-10	-10	-10
Operating range (Cool - Max)	°C	+43	+43	+43	+43	+43	+43	+43	+43
Operating range (Heat - Min)	°C	-15	-15	-15	-15	-15	-15	-15	-15
Operating range (Heat - Max)	°C	+24	+24	+24	+24	+24	+24	+24	+24

(1) EER and COP calculation is based in accordance to EN14511.

(2) Energy Label Scale from A+++ to D. For models below 12kW, the SEER and SCOP is calculated based on values of EU/626/2011. For models above 12kW, the  $\eta_{sc}$  /  $\eta_{sh}$  values is calculated based on EN 14825.

(3) The annual energy consumption is calculated in accordance to EU/626/2011.

(4) The sound pressure of the units shows the value measured of the position 1,5m below the unit. The sound pressure is measured in accordance with Eurovent 6/C/006-97 specification.

(5) When installing the outdoor unit at a higher position than the indoor unit.

\* Recommended fuse for the indoor 3A.

\*\* Above values are in the case of nanoe™ X OFF.

## Supplerende produkter

