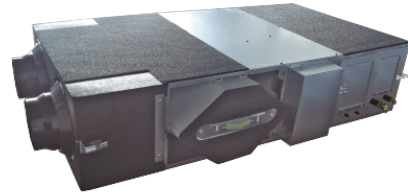


Varmegenvinding Med Dx-Spole

Motorised heat recovery by-pass device automatically controlled by unit control to use fresh air free-cooling when convenient.



Varmegenvinding Med Dx-Spole		Enkeltfaset		
		3 kW	5.1 kW	5.8 kW
Cooling capacity (Nominal)	kW	3,00	5,10	5,80
Heating capacity (Nominal)	kW	2,50	4,40	5,20
Outdoor power source	V	230	230	230
External static pressure (Min) (7)	Pa	90	120	115
Indoor sound pressure (Heat)	dB(A)	39	42	43
Dimensions		390 x 936 x 1.986	390 x 1.186 x 1.986	390 x 1.186 x 1.986
Net weight	kg	81	87	87

Supplerende produkter